

# 1911 21st Ave South



## FOR LEASE

- Highly Visible fronting 21<sup>st</sup> Avenue South
- Walk to Hillsboro Village & Vanderbilt
- Zoning: MUN, Mixed Use, Neighborhood

Information contained herein has been obtained from the owner or other sources we deem reliable. While we have no reason to doubt its accuracy, we do not guarantee it.

Kwasek Commercial Real Estate  
Advisors of Tennessee, LLC

1507 16th Avenue South  
Nashville, TN 37212

[www.kwasekcre.com](http://www.kwasekcre.com)

Matt Kwasek  
Principal Broker  
Owner/ Agent

[matt@kwasekcre.com](mailto:matt@kwasekcre.com)  
615-298-9321 (O)  
615-512-3880 (C)

## 1911 21<sup>st</sup> Ave South, Hillsboro Village:

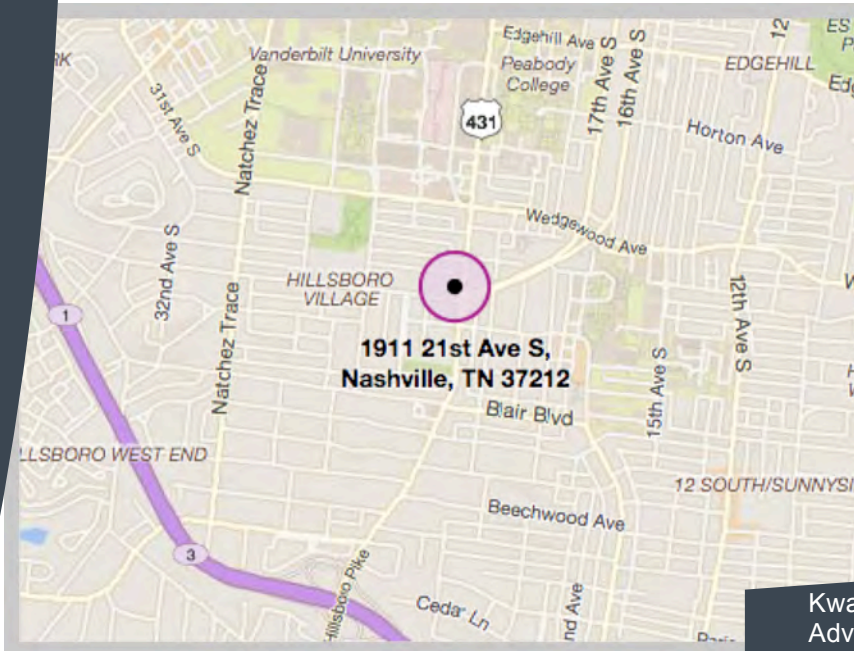
- Building: 3,550+/- SF
- Zoning: MUN, Mixed Use, Neighborhood

### Walk to Hillsboro Village & Vanderbilt:

- Double Dogs, Hopdoddy, Moxy Hotel (Marriott)
- Pancake Pantry, Belcourt Theater, Jackson's, Fido, Jeni's Ice Cream

### Excellent Location:

- Highly Visible
- Vehicles Per Day:
- 21<sup>st</sup> & Capers: 21,122
- 21<sup>st</sup> & I440 : 35,011



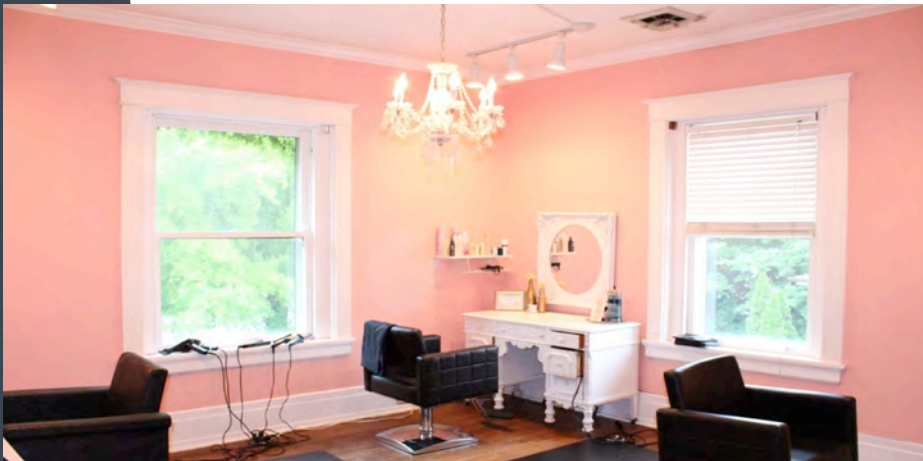
Kwasek Commercial Real Estate  
Advisors of Tennessee, LLC

1507 16th Avenue South  
Nashville, TN 37212

[www.kwasekcre.com](http://www.kwasekcre.com)

Matt Kwasek  
Principal Broker  
Owner/ Agent

[matt@kwasekcre.com](mailto:matt@kwasekcre.com)  
615-298-9321 (O)  
615-512-3880 (C)



Kwasek Commercial Real Estate  
Advisors of Tennessee, LLC

1507 16th Avenue South  
Nashville, TN 37212

[www.kwasekcre.com](http://www.kwasekcre.com)

Matt Kwasek  
Principal Broker  
Owner/ Agent

[matt@kwasekcre.com](mailto:matt@kwasekcre.com)  
615-298-9321 (O)  
615-512-3880 (C)

